

6R



BSC Level 6 Diploma in Occupational Safety and Health

Unit 1 Examination

Tuesday 13 October 2009

9.30am – 12.30pm

RESOURCE BOOKLET

(for use with Question 1)

INSTRUCTIONS TO CANDIDATES

Do not open this booklet until the invigilator tells you to do so.

You may make notes in this resource booklet, but the booklet must be handed in at the end of the examination.

Scenario

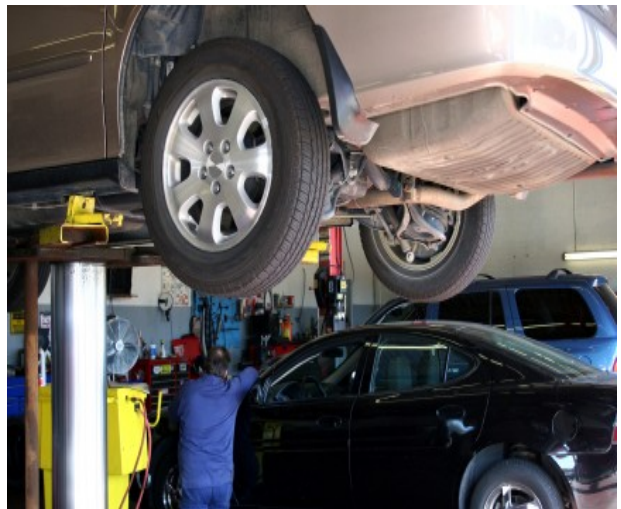
The Arches Garage is a privately owned motor vehicle repair garage. It employs 10 staff with a range of experience working in the business. It has also taken on two 16-year-old apprentices who are receiving on-the-job training.

The garage has three main commercial activities:

- General car service and maintenance
- Accident repair including paint spraying and panel beating
- Conducting statutory MOTs.

The garage is located in three brick-constructed railway arches dating from around 1908. The main structure is safe but the general fabric of the premises is poor. There is no reception area in the garage which means customers are often seen wandering around the garage unsupervised.

The owner and managing director has a good attitude towards health and safety and supports safety training initiatives. However he has recently cancelled the contract for inspecting the spray booth as it has never gone wrong. The company was prosecuted last year by the HSE for falsifying the inspection records of the car lift and the compressed air systems. Two severe cases of dermatitis have been reported but the causes have not been investigated.



Equipment and activities performed on site include:

- Single down draft extraction system for paint spraying
- Welding and flame cutting
- Two car lifts over an open pit
- Compressed air receivers
- Underground diesel and petrol storage
- Oil and fuel storage
- Cutting and grinding
- Vehicle exhaust gas testing
- Tyre replacement
- All electrical equipment is 240v
- The garage uses single and two-pack paints

Facts

- A generic risk assessment has been carried out based on the HSE template
- Employees are trained to NVQ Level 2 or equivalent for their role
- All employees have received safety induction
- Petrol fumes have been reported in the garage
- No ventilation checks have been made on the spray booth
- Housekeeping and chemical storage is consistently poor

Your Remit

As the newly-appointed health and safety adviser for the company, you have been asked to analyse the current situation and put forward suitable recommendations. Specifically you should:

- outline the main health and safety risks and the potential injury or harm to people;
- outline the main legal breaches that could apply;
- outline the policy and organisational issues that will need to be reviewed;
- outline any safety culture failures that exist;
- describe and justify suitable controls to minimise the risk of an incident occurring;
- develop a management action plan based on current and future risks.

Note: any reasonable assumptions about the existence or otherwise of controls can be made as long as they are justified in the context of the scenario.

